

# nexa3D®



## UPGRADE. ADDITIVE. MANUFACTURING

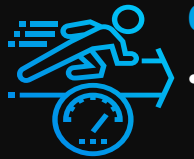
[www.Production-To-Go.com](http://www.Production-To-Go.com)

Patent Pending | Copyright © 2019 Nexa3D

All Rights Reserved

# INTRODUCING SPEED AT SCALE

Printing at comparable injection molding tolerances, the NXE400 is the largest, fastest, most accurate 3D printer available: up to 1 cm/min in z



## Optimized Print Performances

- Printing industrial prototypes and large production parts can now be done in only minutes versus hours



## Optimized Print Performances

- 270 X 160 mm print area
- 4K utility for injection molding tolerances







## Leading 'Print Volume' in its class

- 400 mm precision Z stage
- 16 Liter print volume



# THE MATERIALS: PROPRIETARY RESINS

 <p><b>xSpeed</b> Printing at lightning speeds</p> <p><b>UNIQUE FEATURES</b> FASTEST PRINTING SPEED FULLY FUNCTIONAL PROTOTYPES STRONGER DURABILITY</p> <p><b>Rapid Iterations</b> Form, fit and function analysis Demonstration &amp; Communication Topology optimization studies DfAM analysis Gages &amp; Fixtures Primed for painting or plating Finely Crafted Details</p> <p><b>AVAILABLE NOW</b></p>	 <p><b>xPerform</b> Industrial Strength Faster</p> <p><b>UNIQUE FEATURES</b> FASTEST PRINT SPEED IN ITS CLASS FULLY FUNCTIONAL PARTS WITH INDUSTRIAL STRENGTH</p> <p><b>Rapid Iterations</b> Form, fit and function analysis Demonstration &amp; Communication Topology optimization studies DfAM analysis Gages &amp; Fixtures Primed for painting or plating Finely Crafted Details Injection mold quality &amp; precision Industrial grade Durability &amp; Assembly</p> <p><b>AVAILABLE NOW</b></p>	 <p><b>xPerform Pro</b> Ready for tough use</p> <p><b>UNIQUE FEATURES</b> THERMOPLASTIC LIKE TOUGHNESS HEAT RESISTANT FOR AUTOMOTIVE PERFECT FOR DRILLING AND TAPPING</p> <p><b>Rapid Iterations</b> Form, fit and function analysis Demonstration &amp; Communication Topology optimization studies DfAM analysis Gages &amp; Fixtures Primed for painting or plating Finely Crafted Details Injection mold quality &amp; precision Industrial grade Durability &amp; Assembly</p> <p><b>AVAILABLE NOW</b></p>	 <p><b>Advanced Materials</b> Developing more functional materials with advanced stability and tolerances for more use cases.</p> <p><b>UNIQUE FEATURES</b> WILL HAVE GREATER UV AND HEAT TOLERANCES MORE VERSATILE USE CASES</p> <p>All of our previous features, <b>PLUS</b> Higher rebound for elastomeric Improved Surface finish &amp; texture Improved Impact Resistance Greater Rigidity</p> <p><b>COMING SOON</b></p>
--	---	--	--

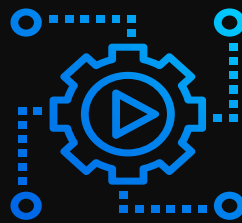
# DISRUPTIVE LSPc TECHNOLOGY

The NXE printer series is ideal for functional prototyping, production tooling, and volume manufacturing without compromise on user experience and total cost of ownership



## User Friendly

- Automated door access
- Automated resin management
- Quick change membrane
- Remote monitoring & diagnostic
- User serviceable



## Fully Autonomous Printing

- All-in-one automation ready print plate
- Adaptive Slice print speed
- 6 Liter resin storage capacity
- Material freshness and recirculation
- Active Thermal Management



Faster Turnaround



Application Versatility



Reduced Costs



# INJECTION MOLDING QUALITY & TOLERANCES

Nexa3D can produce with **greater precision, higher quality and tighter tolerances** than currently possible

Normal Resolution	0.1016mm
High Resolution	0.0508mm
Micro Resolution	0.0254mm

## Normal Resolution

0.010 in. for the XY Draw Plane (0.016 in. for the Z build direction)

## High Resolution

0.005 in. for the XY Draw Plane (0.016 in. for the Z build direction)

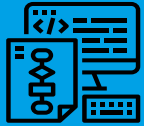
## Micro Resolution

0.0025 in. for the XY Draw Plane (0.008 in. for the Z build direction)

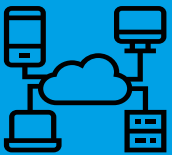


For well-designed parts, tolerances in the X/Y dimension +/- 0.002 in. (0.05mm) for first inch plus +/- 0.001 in./in. (0.001mm/mm), and Z dimension tolerances of +/- 0.005 in. for first inch plus +/- 0.001 in./in. (0.001mm/mm) can typically be achieved. Note that tolerances may change depending on part geometry.

# COGNITIVE CONNECTED SOFTWARE



Deep machine learning algorithms to intelligently slice, topology optimize and adaptively compile complex geometries



On-board and cloud controls for in-situ and remote operations of a single printer or a full factory of printers



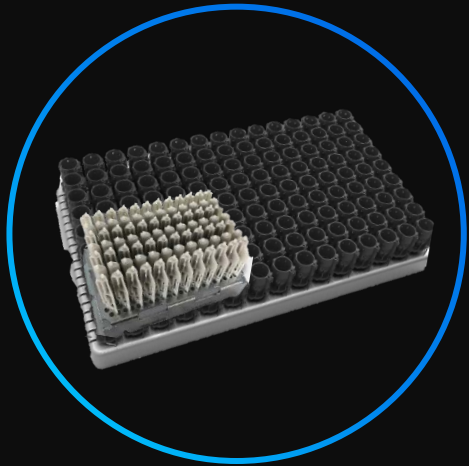
Continues cognitive optimized manufacturing performance and quality

The screenshot displays the nexa3D software interface. At the top, the logo 'nexa3D' is visible on the left, and status indicators 'LED' (off) and 'CONNECTED' (checked) are on the right. The main area is divided into several sections:

- JOB INFO:** Shows the file name 'Screen Shot 2019-05-10 at 3.36.33 PM.png', a progress bar at 20%, and buttons for 'PLAY' and 'CANCEL'.
- TIME:** Displays 'Remaining time Estimated for' and a circular timer showing '00:16'.
- SMART PRINTING:** A toggle switch set to 'Yes'.
- BOTTOM LAYERS:** A slider set to '50 Layers' out of a total of '285,953'.
- CURE TIME:** A slider set to 'Normal Expose'.
- RESIN:** Shows '15 L Volume' and '29 L Level' of 'Dental Resin', with a 'Change Type' button.

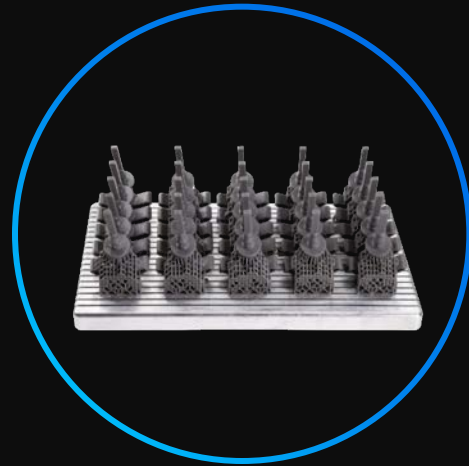
The central 3D view shows a white, complex dental part. At the bottom, a navigation bar includes icons for 'Job', 'Resin', 'Settings', 'Job History', and 'Errors'.

# FOUR DIMENSIONS OF COMPETITIVE ADVANTAGE



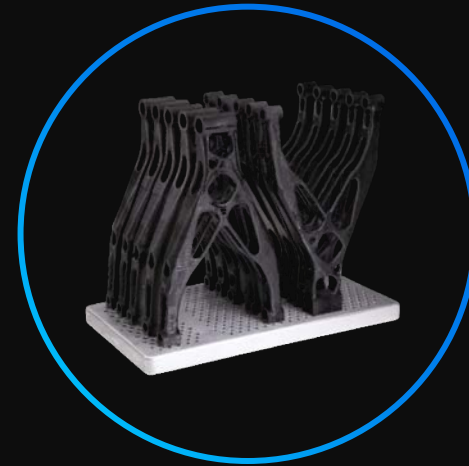
## PRINT PLATE

5X Larger\*



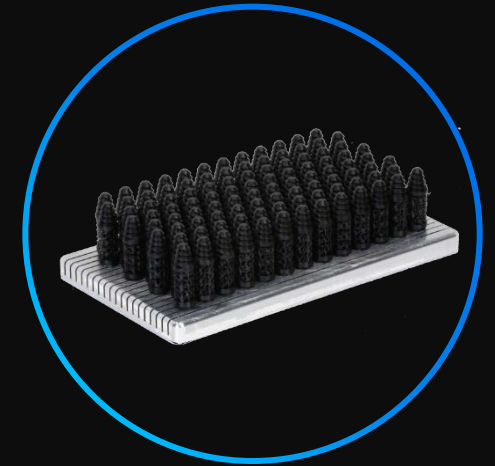
## SPEED

25 deep stick printed in 25min  
(1 min/part)



## PRINT VOLUME

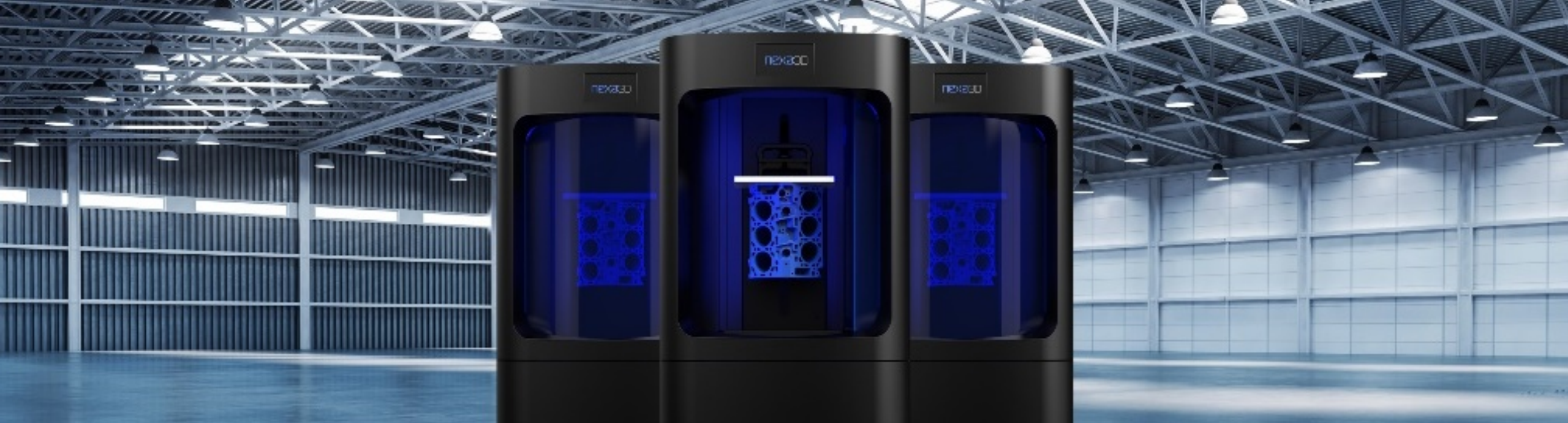
10 break clippers in 60 minutes  
(6 minutes/part)



## CAPACITY

100 precision screws in 10 min  
(6 seconds/part)

\*Compared to 3D Systems Figure 4 Printer



# ACT NOW!

## EARLY USERS' PROGRAM

Be the first to use the  
NEX400

Contact us for details:  
[info@Production-To-Go.com](mailto:info@Production-To-Go.com)

## PLACE YOUR PRE-ORDER

We are ready to take your pre-  
order

A limited amount of NEX400 will  
be available soon

## MORE INFO NEEDED?

Let us know if you have any  
question

Tell us about your application  
and we will support



nexa3D®

Thank you

Contact: [info@Production-To-Go.com](mailto:info@Production-To-Go.com)